



2nd Amendment Shelves.com

2nd Amendment RFID Concealment Shelf Mounting Instructions

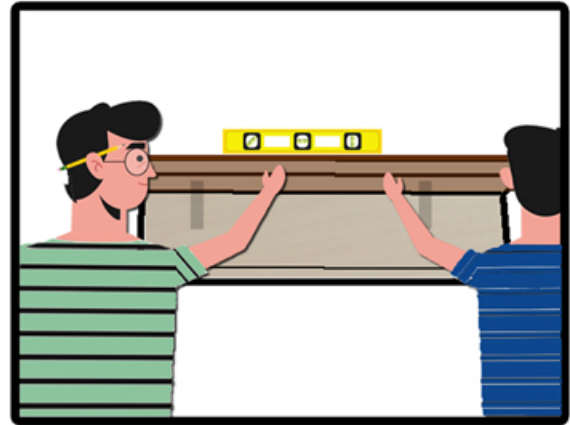


Step One:

Before you start hanging a shelf, decide where it should be placed.

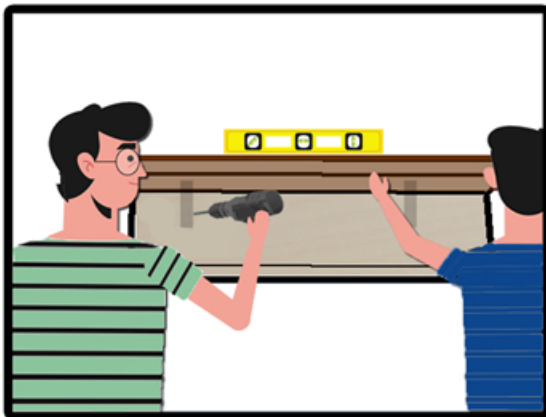
We recommend using a stud finder to locate a stud for one of your shelf screws.

Using painter's tape, mark the wall for the placement of your shelf.



Step Two:

Have a friend help you hold the shelf against the wall. Using a level, clearly mark the painter's tape for your drill holes.

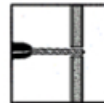


Step Three:

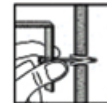
Position the shelf against the wall, locating your marks on the painter's tape.

Drill your through holes into the wall. Depending on the weight of your items, you may need to drill additional mounting holes. Remove your painter's tape. Place additional anchor bolts into the drywall where necessary. Then, reset the shelf level to your drill holes and mount with your screwgun. Do not over tighten your screws.

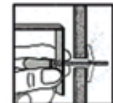
Anchor Bolt Instructions for placement on drywall for additional screws.



1. Drill the required hole through the base material. In denser materials such as high-strength concrete, drill the hole 1/16" larger.



2. Insert bolt through fixture to be fastened, thread on wings, then fold wings completely back and insert through hole until wings spring open.



3. Pull back on assembly to hold wings inside wall to prevent the wings from spinning while tightening bolt. Turn bolt with screwdriver until firmly tightened.

Mounting hardware for your shelf is not included. Please purchase separately. The type of mounting hardware will vary depending on the surface of your walls.

For Drywall Applications: 2nd Amendment Shelves recommends placing at least one screw directly into your stud. Use a secondary Anchor Bolt on drywall only in accompaniment with a primary screw drilled into your stud.

Two Anchor Bolts alone, are not sufficient to hold the weight of your Concealment Shelf.